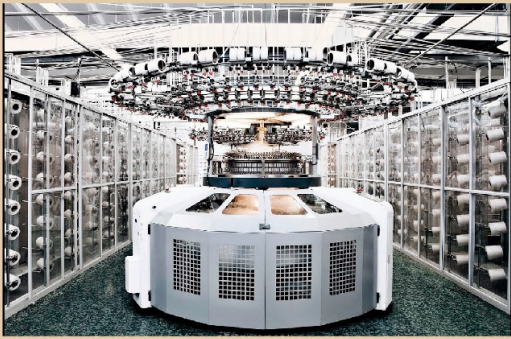




**SE SAHANA EXPORTS**





We at **Sahana Exports** always have a passion to bring fashionable apparel production. We began our journey in the early 2000 and faced a huge challenge in bringing innovative style in clothing. Since then we are operating relentlessly and today with a decade of experience, we have built a team of extremely professional and diligent workforce, determined to provide quality apparel. We are recognized as one of the leading manufacturers in India.

We thrive constantly to meet the client's requirements in all our undertakings, and we work as a team to exceed client expectations; clients are indeed the basic asset of our business. Located in the Knit-city of India, Sahana Exports has grown as a trendsetter in working with latest technologies and implementing unique designs along with quality work.





## KNITS & WOVEN

**PRODUCT RANGE :** Men's, Women's & Kid's

Active wear  
Casual wear  
Sports wear  
Sleep wear

### YARN BLENDS:

Cotton, Organic Cotton, Pima and Giza Cotton, Cotton/Poly, Cotton/ Micro Poly,/Spandex, Soya, Linen, Hemp, Acrylic, Slub, Nylon, Cotton/Nylon, Cotton/Spandex, Modal/Spandex, Viscose, Lurex Bamboo, 100% Poly, Silk blends, Melange

### FABRICS:

Jersey, Pique, Interlock, Rib, French Terry, Fleece, Polar Fleece, Jacquards, Self Jacquards, Mess, Pointel, Velour, Ottoman, Space dyed.

### FINISHES:

Mercerized, Dbl Mercerized, BioWash, BioPolish, Enzyme Wash, Tie & Dye, Peach, Burn Out, Garment Dye, Garment Wash, Acid Wash, PP Spray, Nicking, Grinding

### EMBELLISHMENTS:

Embroidery, Print, Appliqués, Patches, Studs, Sequence, Beads, Handworks

### PERFORMANCES:

Moisture Wicking, UV, Antibacterial, Antimicrobial Fire retardant, 3-x-dry, Nano, Antisoil, Soil release.

## QUALITY TEAM

Quality department with well experienced & dedicated professionals taking care of the quality of the product in all aspects & ensures the approvals are perfect enough to start the production by having production planning meeting to meet the schedule.

Group discussion with entire team to discuss all concepts need to be taken care in prior to have better idea of execution of the product with quality.

We have the below system to meet the quality:

- |   |                   |
|---|-------------------|
| ● Fit Sample                                  | ● Sizeset         |
| ● Labdip                                      | ● Pilot Run       |
| ● Knitdown / Printing, Embroidery Strike offs | ● Mid Inspection  |
| ● Lab testing (SGS) to AATCC, EU, ISO std     | ● Online Auditing |
| ● Pre Production Sample (PPS)                 |                   |

## LAB TESTING :

We test all garments to AATCC for US clients & EU-ISO for European Clients before start of production

## DOCUMENTATION & LOGISTICS

We work on shipping terms FOB, TT shipments.

Our documentation & logistics team takes care of complete shipping activities with updates of copy documents, schedules & tracking till the cargo is delivered to the customers warehouse as committed.

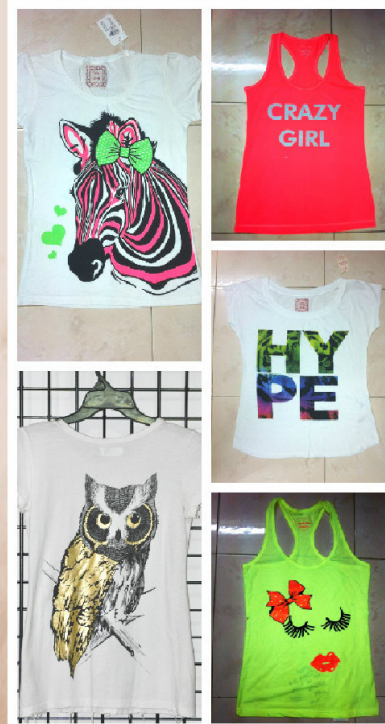
Thus maintaining a good track record of close follow up.

Our Factory Certified for WRAP, SA8000:2000 (which is equivalent FLA std), ISO9000:2000 (quality management), GOTS, OE, SEDEX

## MENS



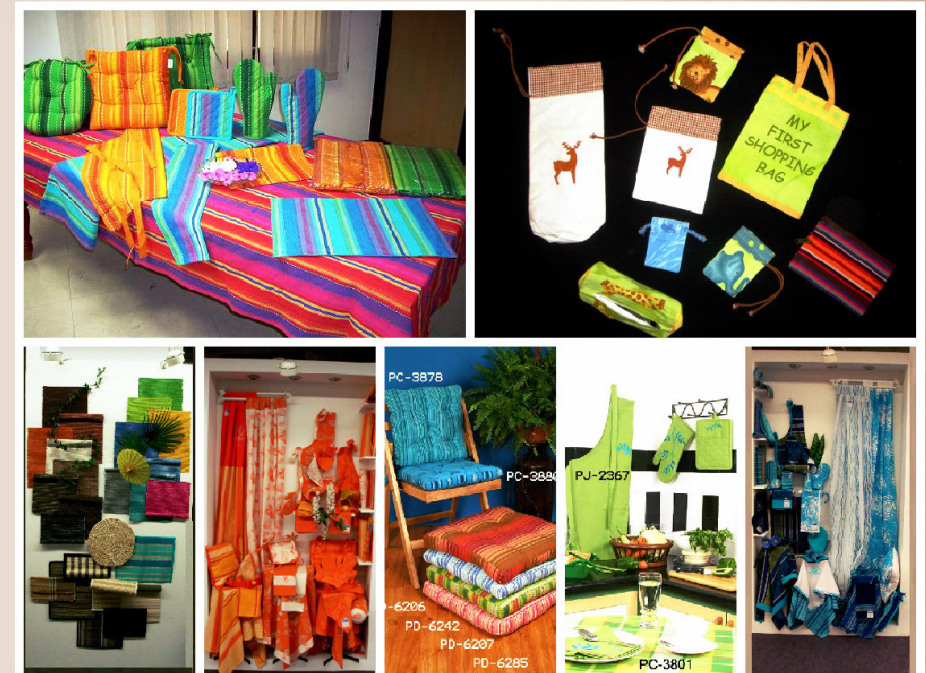
## LADIES



## PRINT SWATCH



## HOME TEXTILES



# CONTACT US

## 📍 INDIAN Office:

27/13, College Road, 7th Cross,  
Behind Government Hostel,  
Tirupur 641602,  
Tamilnadu, INDIA

📞 Hp: +91-99945-87778  
+91-94455-87778

☎ Ph : +91-421-4328778

## 📍 USA Office:

2403, Ripplemeade Ct,  
Herndon, VA 20171,  
USA

Ph : +1-703 3377511

**SE SAHANA EXPORTS**

✉ [kanth@sahanaexports.com](mailto:kanth@sahanaexports.com)

✉ [sahanaexportss@gmail.com](mailto:sahanaexportss@gmail.com)

🌐 [www.sahanaexports.com](http://www.sahanaexports.com)

